



啟德空中花園

Kai Tak Sky Garden

前跑道上的新地標 —————>

A New Landmark on the
Former Runway





在 啟德發展計劃下，昔日的啟德機場跑道一帶將發展成一個集住宅、商業及旅遊於一身的城市樞紐。在前跑道區狹長的土地，為了增加公共綠化空間，我們採用一地多用的模式，以創新方法，將承豐道隔音屏障的頂部設計成園景平台，名為啟德空中花園，成為香港第一個興建於隔音屏障和行車道之上的大型公園。

啟德空中花園是一個全長約1.4公里的多功能高架園景平台，既具減低道路交通噪音的作用，亦提供約兩公頃綠意盎然的休憩空間，市民可在此盡覽維多利亞港與毗鄰地區的景致。空中花園設有多條行人通道，方便市民往來啟德郵輪碼頭、啟德跑道公園、日後的都會公園及啟德旅遊中樞發展項目，以及將來位於花園兩旁的住宅與商業區。



The Kai Tak Development (KTD) envisions the transformation of the former Kai Tak Airport runway site into an urban hub consisting a mixture of residential, commercial and tourism developments. With the aim of providing more green space along the strip of land at the former runway, “single site, multiple use” model with innovative solution was adopted. The roof of the noise barriers at Shing Fung Road is designed as a landscaped deck, named Kai Tak Sky Garden (the Sky Garden), being the first large garden built on noise barriers and carriageways in Hong Kong.

The Sky Garden is a multi-purpose elevated landscaped deck of about 1.4 kilometres long. It not only acts as a noise mitigation measure, but also provides approximately two hectares of green open space overlooking the Victoria Harbour and the vicinity. Pedestrian links of the Sky Garden facilitate movement among the Kai Tak Cruise Terminal, the Kai Tak Runway Park, the future Metro Park and Tourism Node development, as well as the planned residential and commercial developments on both sides of the garden.



SKYGARDEN 13 ———> 31





航空元素 Elements of Aviation

昔日的啟德機場不單見證了香港的城市發展，更是香港人的集體回憶。為了讓遊人緬懷昔日機場的風采，空中花園的設計特意注入多種航空元素：The former Kai Tak Airport not only witnessed Hong Kong's urban development, but also becomes part of Hong Kong people's collective memory. As a tribute to the former airport, the design of the Sky Garden has adopted various elements of aviation:



北面半月形園景廊的外形，參照了登機橋的設計，象徵旅程的開始。而另一端的南面半月形園景廊則以海天一色的畫面，帶出飛機「起飛」時衝上雲霄的聯想。

The Northern Crescent Walkway is reminiscent of the air bridge, a transition space that expresses the beginning of a journey; and the Southern Crescent Walkway on the other end signifies the idea of "taking off", matched with a colour scheme that expresses the sky and the sea.



園景平台的形狀模仿飛機機身及機翼。
The shape of the landscaped deck resembles that of the fuselage and wings of an aeroplane.

創新獨特設計
Innovative and
Distinctive Design





✈ 平台兩端的數字「13」和「31」分別象徵前機場跑道兩端用作識別方向的「一三跑道」和「三一跑道」標記。
The numbers “13” and “31” at both ends of the deck respectively symbolise the Runway 13 and Runway 31 signage at both ends of the former runway for distinguishing different orientations.



花園的夜間照明效果營造出昔日機場跑道的氣氛。
The feature lighting of the garden strives to recreate the ambience of the former runway at night.



活力磁場元素 Current of Vitality

啟德發展區以「啟德公共創意」為品牌概念，通過別樹一幟的視覺元素，帶出啟德發展計劃「活力磁場」的設計主題：

The KTD's branding concept “Kai Tak Public Creatives” is embodied by unique visual elements that echo the design theme of “Current of Vitality”:



✈ 支撐園景平台的一整列結構柱，呼應「活力磁場」主題中的「樹幹」意念。
The column sets supporting the landscaped deck structure are an echo of the “tree trunk” concept of the theme of “Current of Vitality”.



隔音屏障的波浪式設計，靈感來自碧波盪漾的動態水景。

The curved, rippling design of the noise barriers is inspired by dynamic waterflow.



地面廣場的布局，猶如「活力磁場」的能量漩渦，象徵啟德的澎湃動力。

The layout of the Ground Plaza is inspired by the energy swirls of “Current of Vitality” and symbolises the vibrancy of Kai Tak.

不一樣的遊樂體驗 A Different Recreational Experience

觀景門廊 Lookout Galleries



提供三個不同角度，讓市民盡覽維多利亞港與毗鄰地區的景致。

Offers spectacular views of Victoria Harbour and the vicinity from three different perspectives.

中央園景廊 Central Walkway



平台的行人路劃分為春、夏、秋、冬四個主題區域，種植超過80種的花草樹木，既能突顯本地植物的多樣性，亦能展現一年四季不同的色彩。

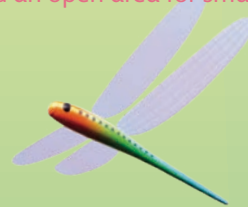
The central walkway on the deck is divided into four zones themed around spring, summer, autumn and winter respectively. More than 80 species of flowers and trees in the garden show the diversity of local plants and different colours of the four seasons.



主題廣場 Themed Plazas

設有三個各具特色的架空廣場，分別為「花園廣場」、「草地廣場」和「噴泉廣場」，並附設綠化休憩空間、草坪、草藥園及小型表演空間等設施，供市民消閒玩樂，各適其適。

Three elevated plazas, namely the Garden Plaza, the Lawn Plaza and the Fountain Plaza, provide various leisure and recreational facilities that suit the needs of everyone, such as green open space, lawns, herb garden and an open area for small-scale performances.



北面半月形園景廊
Northern Crescent
Walkway

13

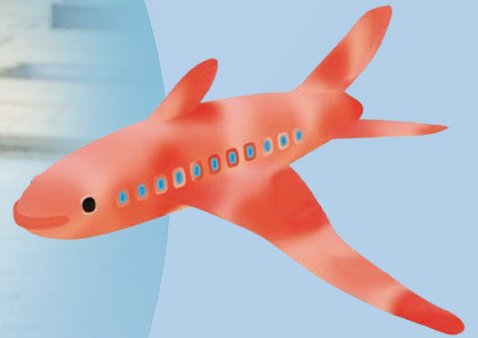
春 Spring



花園廣場
Garden Plaza

夏 Summer





嬉水園地 Water Play

花園內遍佈各式各樣的水景及玩水元素，包括嬉水遊樂隧道、水幕、旱地噴泉、水梯、水池及水霧設施，為遊人帶來互動樂趣。

There are special water features in the garden like water tunnel, water curtain, dry fountains, water cascades, mirror pool and mist jets, providing interactive fun to the public.

圓形露天劇場 Amphitheatre

地面廣場附設多功能中央草坪和觀眾席，可用作文娛活動及表演場地。

A multi-functional lawn with seating area at the Ground Plaza for recreational activities and performances.



南面半月形園景廊
Southern Crescent Walkway

草地廣場
Lawn Plaza

秋 Autumn ❁

噴泉廣場
Fountain Plaza

冬 Winter ❁

地面廣場
Ground Plaza

31



傳奇的13/31跑道 The Legendary Runway 13/31

昔日的啟德機場跑道以13/31 (讀作「一三三一」) 命名, 原因是飛機升降的兩個磁方位分別為135度及315度。這條13/31跑道曾是世界公認最具挑戰性的跑道之一, 機師須具備高超的技術和準確的判斷力, 才能克服九龍區群山環抱與大廈林立的特殊環境, 讓飛機順利起飛和安全著陸。



The former runway of Kai Tak Airport was numbered 13/31 because of its magnetic orientation of 135/315 degrees. This runway 13/31 was known as one of the most challenging airport runways in the world. Exceptional skills and accurate judgement were required for pilots to manoeuvre the aircrafts over the hilly terrain and high density buildings in Kowloon for safe landing and take-off.

期間限定
Time-limited

三維擴增實境

3D augmented reality (AR)

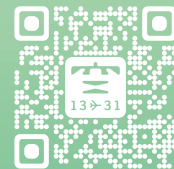


遊人可在空中花園的「打卡位」拍照並在社交媒體上分享作品, 透過三維擴增實境手機應用程式和園內的拍照建議, 激發無限攝影靈感。3D AR mobile application and a series of photography ideas are available at the Sky Garden, offering limitless photo opportunities at various check-in spots for sharing on social media platforms.

輕鬆易達 Easy to get to

啟德空中花園現已開放, 有關空中花園的詳細資訊及前往方法, 可瀏覽網站
The Kai Tak Sky Garden is now open. For more details on the Sky Garden and how to get there, please visit

www.skygarden1331.hk



局長隨筆 SDEV's Blog

www.devb.gov.hk/tc/home/my_blog/index.html

發展局 Development Bureau
讚好 Like

www.facebook.com/DevelopmentBureau

香港特別行政區政府 土木工程拓展署
Civil Engineering and Development Department
The Government of the Hong Kong Special Administrative Region

查詢詳情, 請與啟德辦事處聯絡。
地址: 香港九龍油麻地海庭道11號西九龍政府合署南座8樓
For further information, please contact the Kai Tak Office.
Address: 8/F, South Tower, West Kowloon Government Offices,
11 Hoi Ting Road, Yau Ma Tei, Kowloon, Hong Kong

電話 Tel (852) 3106 3432
傳真 Fax (852) 2739 0076
電郵 e-mail ktd@cedd.gov.hk
www.ktd.gov.hk

